



ALVENIUS[®]

PIPE SYSTEM

TECHNICAL DATA



Information



The Alvenius standard product range is approved according to PED 97/23/EC. The PED approval has been integrated with the certified Quality Management System.

ØD Outside diameter
t Wall thickness
L Length

Max working pressure at +20°C

When item number is missing, please contact Alvenius.

Other pipe lengths can be offered on request.

Untreated pipes can be offered on request.

AB Alvenius Industrier maintains a continual policy of product improvement and, therefore, reserves the right to change product specifications, designs and standard equipment without notice and without incurring obligation.

K10 - Metrical standard

Up to 25 bar Hot-dip galvanized or thermo-plastic coated

Pipes	4
Supplement pipes	5
Quick couplings	5
Mounting grease	5
Rubber gaskets	5
Bolt, nut, lock rings	5
Bends, smooth	6
Branch pipes	6
Tees	7
Tees with threaded outlet	7
Hose sockets	7
Air distributor pipes	8
Reducers	8
Connecting pieces with thread	8
Connecting pieces with flange	8
End caps	9
Welding rings, untreated	9
Alvenius gate valves	9



Type Victaulic - ISO standard

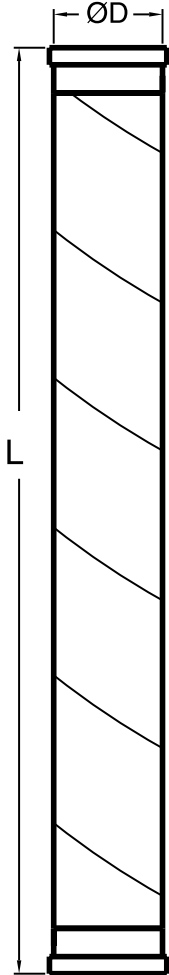
Up to 80 bar Hot-dip galvanized or thermo-plastic coated

Pipes	10-11
Quick couplings	11
Rubber gaskets	11
Bends	12
Reducers Victaulic-K10	12
Reducers	13
Connecting pieces with flange	13
Tees	13
Tees with threaded outlet	14
End caps	14
Welding rings, untreated	14



K10 pipes and pipe fittings

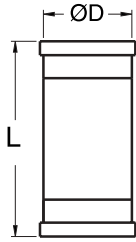
Pipes K10



ØD mm	t mm	L m	Max working pressure bar	Hot-dip galvanized Item No	Weight kg	Thermo-plastic coated Item No	Weight kg
48	1,4	0,2	25	100032101	0,40		
48	1,4	0,5	25	100034101	0,92		
48	1,4	1	25	100035101	1,74		
48	1,4	2	25	100036101	3,66		
48	1,4	3	25	100037101	5,46		
48	1,4	4	25	100038101	7,25		
48	1,4	5	25	100039101	9,05		
48	1,4	5,8	25	100041101	10,49		
60	1,8	0,2	25	101122101	0,60		
60	1,8	0,5	25	101124101	1,38		
60	1,8	1	25	101125101	2,90		
60	1,8	2	25	101126101	5,72		
60	1,8	3	25	101127101	8,54		
60	1,8	4	25	101128101	11,36		
60	1,8	5	25	101129101	14,18		
60	1,8	5,8	25	101131101	16,43		
76	2	0,2	25	100071101	0,92		
76	2	0,5	25	100074101	2,07		
76	2	1	25	100075101	4,36		
76	2	2	25	100076101	8,04		
76	2	3	25	100077101	11,97		
76	2	4	25	100078101	15,91		
76	2	5	25	100079101	19,85		
76	2	5,8	25	100081101	22,99		
102	2	0,2	25	100120101	1,23	100120106	1,30
102	2	0,5	25	100104101	2,68	100104106	2,80
102	2	1	25	100105101	5,22	100105106	5,84
102	2	2	25	100106101	10,84	100106106	10,84
102	2	3	25	100107101	16,13	100107106	16,13
102	2	4	25	100108101	21,42	100108106	21,42
102	2	5	25	100109101	26,71	100109106	26,71
102	2	5,8	25	100111101	30,95	100111106	30,94
152	2	0,2	25	101237101	2,24		
152	2	5,8	25	101240101	46,87		
152	2,5	0,2	25	100142101	2,36	100142106	2,57
152	2,5	0,5	25	100144101	5,17	100144106	5,32
152	2,5	1	25	100145101	9,92	100145106	10,18
152	2,5	2	25	100146101	20,22	100146106	20,22
152	2,5	3	25	100147101	30,01	100147106	30,01
152	2,5	4	25	100148101	39,79	100148106	39,79
152	2,5	5	25	100149101	49,58	100149106	49,58
152	2,5	5,8	25	100151101	57,41	100151106	57,21
203	3	0,2	16	100188101	5,27	100188106	5,26
203	3	0,5	16	100193101	9,94	100193106	9,92
203	3	1	16	100194101	17,72	100194106	17,67
203	3	2	16	100195101	33,27	100195106	33,18
203	3	3	16	100196101	48,83	100196106	48,70
203	3	4	16	100197101	64,39	100197106	64,21
203	3	5	16	100198101	79,95	100198106	79,72
203	3	5,8	16	100192101	92,39	100192106	92,13
273	4	0,2	16	100331101	8,11	100331106	8,10
273	4	0,5	16	100332101	16,38	100332106	16,35
273	4	1	16	100333101	30,16	100333106	30,10
273	4	2	16	100334101	57,71	100334106	57,59
273	4	3	16	100335101	85,27	100335106	85,09
273	4	4	16	100336101	112,83	100336106	112,59
273	4	5	16	100337101	140,39	100337106	140,08
273	4	5,8	16	100330101	162,43	100330106	162,08
318	4	0,2	16	100222101	12,23	100222106	12,22
318	4	0,5	16	100224101	21,88	100224106	21,85
318	4	1	16	100225101	37,97	100225106	37,90
318	4	2	16	100226101	70,14	100226106	69,99
318	4	3	16	100227101	102,30	100227106	102,09
318	4	4	16	100228101	134,47	100228106	134,19
318	4	5	16	100229101	166,64	100229106	166,28
318	4	5,8	16	100230101	192,37	100230106	191,96
355	4	0,2	16	100758101	13,85	100758106	13,83
355	4	0,5	16	100759101	24,64	100759106	24,60
355	4	1	16	100760101	42,61	100760106	42,54
355	4	2	16	100761101	78,57	100761106	78,41
355	4	3	16	100762101	114,53	100762106	114,29
355	4	4	16	100763101	150,49	100763106	150,17
355	4	5	16	100764101	186,45	100764106	186,05
355	4	5,8	16	100757101	215,22	100757106	214,75

K10 pipes and pipe fittings

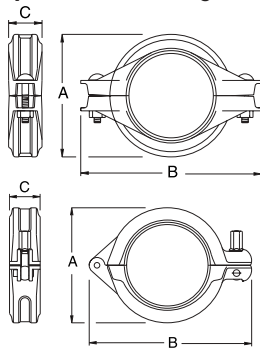
Supplement pipes K10



ØD mm	t mm	L m	Max working pressure bar	Hot-dip galvanized Item No	Weight kg	Thermo-plastic coated Item No	Weight kg
48	1,4	148	25	101211101	0,32		
60	1,8	160	25	101212101	0,53		
76	2	176	25	101213101	0,85		
102	2	202	25	100985101	1,22	100985106	1,21
152	2,5	252	25	101218101	2,92	101218106	2,90

Quick couplings and accessories

Couplings K10/K70 complete with rubber gasket



ØD mm	A mm	B mm	C mm	Max defl.	Max work. pres. bar	Painted Item No	Weight kg	Thermo-plastic coated Item No	Weight kg
48	K10 77	124	37	5,0°	25	120258109	0,62		
60	K10 89	137	39	2,5°	25	120267109	0,71		
76	K10 109	168	40	4,0°	25	120276109	0,93		
102	K10 140	208	46	2,0°	25	120290109	1,49	120290106	1,54
152	K10 202	280	55	2,1°	25	120311109	2,92	120311106	3,10
203	K10 267	350	83	2,1°	16	120330109	6,72	120330106	7,07
273	K10 343	456	84	1,4°	16	120354109	14,17	120354106	18,20
318	K10 393	490	80	0,8°	16	120360109	16,60	120360106	17,00
355	K10 444	544	81	0,9°	16	120370109	16,78	120370106	22,00
48	K70 77	130	37	6,5°	16	120900709	0,68		
60	K70 89	142	39	4,5°	16	120901709	0,81		
76	K70 110	162	40	5,0°	16	120902709	0,97		
102	K70 143	210	46	2,5°	16	120903709	1,80		
152	K70 206	291	55	1,5°	16	120904709	3,79		

Mounting grease

Weight	Item No	Weight kg
125 gram Tub	300029000	0,15
907 gram Can	300028000	1,10

Rubber gaskets



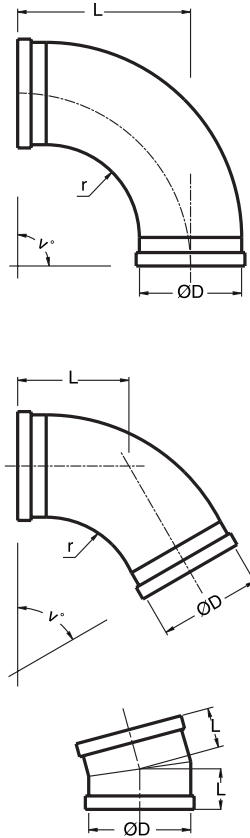
ØD mm	EPDM Item No	Weight kg
48	120264101	0,02
60	120273101	0,03
76	120282101	0,05
102	120296101	0,08
152	120315101	0,20
203	120334101	0,24
273	120357101	0,40
318	120363101	0,59
355	120373101	0,72

Bolt, Nut, Lock ring

ØD mm	Bolt	Item No	Weight kg
48	3/8"x51	120159991	0,03
	Nut	120160991	0,01
	Lock ring	120161100	0,01
60/76	3/8"x57	120162991	0,03
	Nut	120160991	0,01
	Lock ring	120161100	0,01
102	1/2"x57	120166991	0,07
	Nut	120167991	0,02
	Lock ring	120168100	0,01
152	1/2"x70	120169991	0,07
	Nut	120167991	0,02
	Lock ring	120168100	0,01
203	5/8"x76	120163991	0,14
	Nut	120164991	0,04
	Lock ring	120165100	0,01
273/	7/8"x85	120175991	0,35
318/	Nut	120176991	0,07
355	Lock ring	120177100	0,02

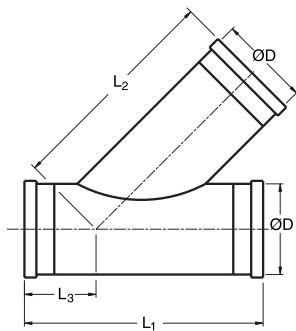
K10 pipes and pipe fittings

Bends, smooth short radius



ØD mm	Angle°	L mm	r mm	Max working pressure bar	Hot-dip galvanized Item No	Weight kg	Thermo-plastic coated Item No	Weight kg
48	7,5	51		25	110445101	0,28		
48	15	53		25	110446101	0,25		
48	30	58	34	25	110447101	0,36		
48	45	67	34	25	110448101	0,42		
48	90	100	34	25	110450101	0,55		
60	7,5	52		25	110466101	0,38		
60	15	54		25	110467101	0,38		
60	30	63	46	25	110468101	0,56		
60	45	74	46	25	110469101	0,66		
60	90	119	46	25	110471101	0,96		
76	7,5	50		25	110487101	0,53		
76	15	55		25	110488101	0,53		
76	30	68	57	25	110489101	0,84		
76	45	82	57	25	110490101	1,01		
76	90	138	57	25	110492101	1,52		
102	7,5	53		25	110529101	0,72	110529106	0,71
102	15	57		25	110530101	0,72	110530106	0,70
102	30	79	82	25	110531101	1,45	110531106	1,42
102	45	98	82	25	110532101	1,82	110532106	1,77
102	90	177	82	25	110534101	2,81	110534106	2,74
152	7,5	50		25	110585101	1,54	110585106	1,52
152	15	720		25	110586101	1,84	110586106	1,80
152	30	101	139	25	110587101	3,42	110587106	3,30
152	45	132	139	25	110588101	4,41	110588106	4,24
152	90	258	139	25	110590101	7,31	110590106	6,95
203	7,5	62	186	16	111220101	4,96	111220106	4,89
203	15	81	186	16	111221101	6,19	111221106	6,04
203	30	120	186	16	111222101	8,21	111222106	7,92
203	45	162	186	16	111223101	11,28	111223106	10,83
203	90	331	186	16	111225101	19,07	111225106	18,11
273	7,5	73	245	16	110669101	8,96	110669106	8,84
273	15	98	245	16	110670101	10,76	110670106	10,49
273	30	150	245	16	110671101	15,52	110671106	14,97
273	45	206	245	16	110672101	18,40	110672106	17,66
273	90	429	245	16	110674101	30,80	110674106	29,26
318	7,5	73	295	16	110679101	11,13	110679106	10,98
318	15	120	295	16	110678101	17,40	110678106	16,97
318	30	182	295	16	110677101	24,79	110677106	23,92
318	45	249	295	16	110676101	32,19	110676106	30,90
318	90	517	295	16	110675101	54,00	110675106	51,30
355	7,5	86	355	16	110725101	22,80	110725106	22,49
355	15	118	355	16	110726101	22,80	110726106	22,23
355	30	191	355	16	110727101	32,60	110727106	31,46
355	45	269	355	16	110728101	42,30	110728106	40,61
355	90	582	355	16	110730101	71,50	110730106	67,93

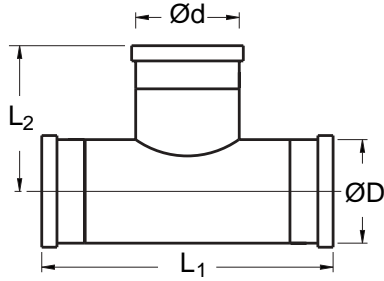
Branch pipes 45°



ØD mm	L ₁ mm	L ₂ mm	L ₃ mm	Max work.press bar	Hot-dip galvanized Item No	Weight kg	Thermo-plastic coated Item No	Weight kg
48	225	195	88	17	110173101	0,83		
76	280	250	102	15	110178101	2,06		
102	325	316	112	10	110184101	3,20	110184106	3,02
152	400	380	125	8	110189101	7,26	110189106	7,05

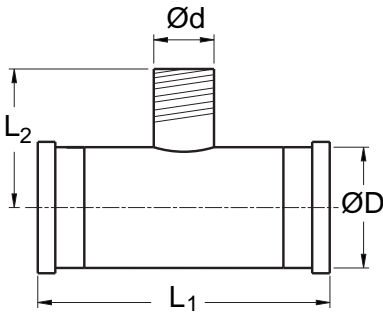
K10 pipes and pipe fittings

Tees



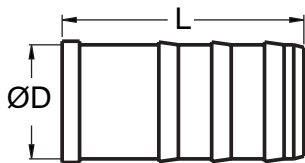
ØD mm	Ød mm	L ₁ mm	L ₂ mm	Max working pressure bar	Hot-dip galvanized Item No	Weight kg	Thermo-plastic coated Item No	Weight kg
48	48	148	99	25	111696101	0,49		
60	48	160	105	25	111697101	0,65		
60	60	160	105	25	111698101	0,75		
76	48	176	113	25	111699101	0,98		
76	60	176	113	25	111700101	1,03		
76	76	176	138	25	111701101	1,25		
102	48	202	125	25	111705101	1,39		
102	60	202	125	25	111706101	1,52		
102	76	202	151	25	111707101	1,67		
102	102	202	151	18	111709101	1,78	111709106	1,84
152	76	252	151	21	111712101	3,20		
152	102	252	176	18	111713101	3,41	111713106	3,42
152	152	252	176	14	111715101	3,98	111715106	4,00
203	152	509	202	14	111727101	10,96	111727106	11,00
203	203	509	255	12	111728101	14,06	111728106	14,10
273	273	579	290	12	111735101	32,76	111735106	32,86
318	203	640	315	14	111741101	34,50		34,60
318	273	640	315	15	111907101	36,30	111907106	36,41
318	318	640	315	10	111739101	43,28	111739106	43,41
355	355	325	652	13	111724101	58,50	111724106	58,68

Tees with threaded outlet



ØD mm	Ød mm	L ₁ mm	L ₂ mm	Max working pressure bar	Hot-dip galvanized Item No	Weight kg	Thermo-plastic coated Item No	Weight kg
48	R1"	148	80	25	111743101	0,50		
48	R2"	148	97	25	111744101	0,81		
60	R1"	160	87	25	111745101	0,69		
60	R2"	160	70	25	111746101	0,80		
60	R2½"	160	105	25	111747101	0,92		
76	R1"	176	96	25	111748101	0,98		
76	R2"	176	88	25	111749101	1,16		
76	R3"	176	164	25	111750101	1,65		
102	R1"	202	108	25	111752101	1,42	111752106	1,37
102	R2"	202	108	25	111909101	1,51	111909106	1,45
102	R4"	202	165	25	111753101	2,46	111753106	2,37
152	R1"	252	135	25	111756101	3,06	111756106	2,95
152	R2"	252	126	25	111910101	3,42	111910106	3,30
152	R4"	252	206	24	111757101	4,12	111757106	3,98

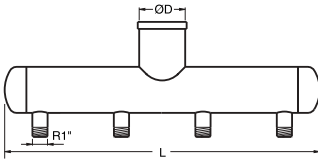
Hose sockets



ØD mm	Ød mm	L mm	Max working pressure bar	Hot-dip galvanized Item No	Weight kg
48	1"	185	25	111679101	0,45
48	1½"	142	25	111680101	0,42
48	2"	190	25	111279101	0,52
60	2"	212	25	111683101	1,17
76	2"	208	25	111684101	1,20
76	3"	254	25	111281101	1,59
102	2"	208	25	111685101	1,32
102	3"	250	25	111686101	1,74
102	4"	215	25	111283101	2,42
152	6"	257	25	111285101	4,84
203	8"	275	16	111690101	9,45

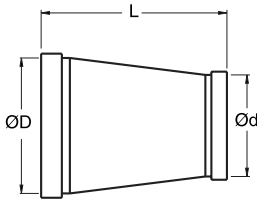
K10 pipes and pipe fittings

Air distributor pipes



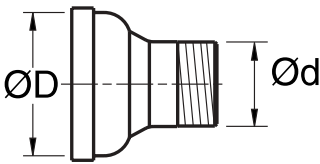
ØD mm	Number of outlets	L mm	Max work. pressure bar	Hot-dip galvanized Item No	Weight kg
48	3	492	25	111333101	2,34
60	4	676	25	111336101	3,02
76	4	686	25	111339101	3,98
102	4	700	18	111345101	5,28
152	4	726	13	111351101	9,61

Reducers



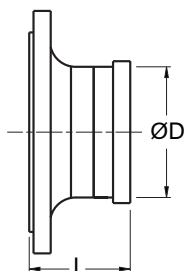
ØD mm	Ød mm	L mm	Max work. pressure bar	Hot-dip galvanized Item No	Weight kg	Thermo-plastic coated Item No	Weight kg
60	48	85	25	111850101	0,72		
76	48	85	25	111851101	0,39		
76	60	86	25	111852101	0,44		
102	48	135	25	111861101	0,53		
102	60	135	25	111862101	0,59		
102	76	85	25	111863101	0,65		
152	48	147	25	111866101	2,94		
152	76	130	25	111867101	2,05		
152	102	85	25	111868101	1,19	111868106	1,15
203	152	191	16	111875101	4,54	111875106	4,25
254	203	278	16	111879101	9,11	111879106	8,74
318	203	303	16	111204101	18,52	111204106	17,77
318	254	303	16	111205101	19,31	111205106	18,54
318	273	303	16	111206101	12,58	111206106	12,08
355	318	430	16	111209101	16,21	111209106	15,56

Connecting pieces with thread



ØD mm	Ød mm	Max work. pressure bar	Hot-dip galvanized Item No	Weight kg	Thermo-plastic coated Item No	Weight kg
48	R1"	25	110213101	0,29		
48	R2"	25	110215101	0,48		
60	R1"	25	110216101	0,45		
60	R2"	25	110217101	0,53		
60	R2½"	25	110218101	0,96		
76	R1"	25	110219101	0,72		
76	R2"	25	110221101	0,60		
76	R3"	25	110223101	1,12		
102	R2"	25	110227101	0,74	110227106	0,71
102	R3"	25	110229101	1,29	110229106	1,23
102	R4"	25	110230101	2,79	110230106	2,67
152	R6"	25	110237101	4,64	110237106	4,46

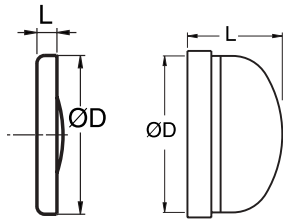
Connecting pieces with flange



ØD mm	Flange DN/PN	DIN	L mm	Max work. press. bar	Hot-dip galvanized Item No	Weight kg	Thermo-plastic coated Item No	Weight kg
48	40/16	2633	87	16	111768101	1,97		
60	60/16	2633	90	16	111771101	2,81		
76	65/16	2633	90	16	111774101	3,43		
102	100/16	2633	97	16	111780101	5,08	111780106	5,36
152	150/16	2633	100	16	111763101	9,04	111763106	8,72
203	200/10	2632	112	10	111789101	14,16	111789106	13,60
273	250/10	2632	118	10	111798101	18,63	111798106	17,88
318	300/10	2632	128	10	111799101	23,73	111799106	22,78
355	350/10	2632	118	10	111807101	26,20	111807106	25,15

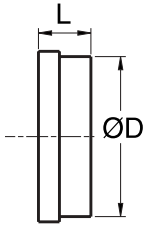
K10 pipes and pipe fittings

End caps



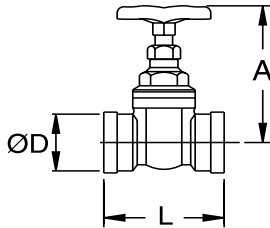
ØD mm	L mm	Max work. pressure bar	Hot-dip galvanized Item No	Weight kg	Thermo-plastic coated Item No	Weight kg
48	13	25	110349101	0,08		
60	14	25	110351101	0,19		
76	14	25	110353101	0,19		
102	17	25	110357101	0,34	110357106	0,32
152	20	25	110361101	0,89	110361106	0,86
203	123	16	110364101	4,43	110364106	4,25
273	143	16	111816101	7,98	111816106	7,66
318	161	16	110368101	10,57	110368106	10,15
355	159	16	110370101	29,50	110370106	28,32

Welding rings, untreated



ØD mm	L mm	Max work. pressure bar	Item No	Weight kg
48	43	25	121898100	0,12
60	43	25	121899100	0,15
76	43	25	121910100	0,23
102	43	25	121902100	0,33
152	43	25	121904100	0,70
203	43	16	120334100	1,65
273	48	16	120356100	2,76
318	58	16	120362100	4,62
355	48	16	120390100	6,65

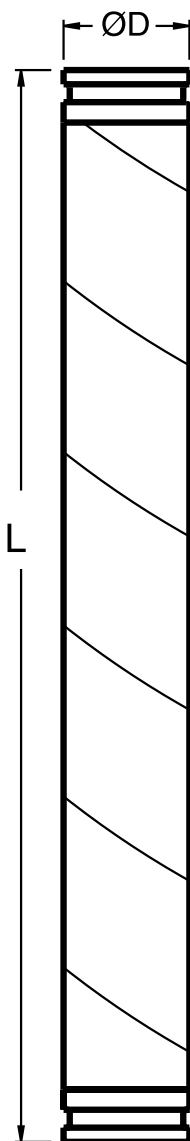
Alvenius gate valves



Ø D mm	A mm	L mm	Max work. pressure bar	Brass Item No	Weight kg
48	135	110	16	130001000	1,38
60	155	120	16	130002000	2,05
76	195	125	16	130003000	3,20
102	202	142	16	130004000	4,94
152	390	200	16	130005000	20,91

Type Victaulic pipes and pipe fittings

Pipes type Victaulic



ØD mm	t mm	L m	Max working pressure bar	Hot-dip galvanized Item No	Weight kg	Thermo-plastic coated Item No	Weight kg
60	1,8	0,2	50	101122801	0,59		
60	1,8	0,5	50	101124801	1,54		
60	1,8	1	50	101125801	2,87		
60	1,8	3	50	101127801	8,82		
60	1,8	5,8	50	101131801	17,05		
76	2	0,2	60	100071801	0,82		
76	2	0,5	60	100074801	2,05		
76	2	1	60	100075801	4,11		
76	2	3	60	100077801	12,32		
76	2	5,8	60	100081801	23,81		
89	2	0,2	40	100082801	0,96	100082806	0,91
89	2	5,8	40	101540801	27,93	101540806	26,29
89	2,9	0,2	70	101549801	1,35	101549806	1,30
89	2,9	0,5	70	100094801	3,38	100094806	3,24
89	2,9	1	70	100091801	6,76	100091806	6,49
89	2,9	3	70	100093801	20,29	100093806	19,46
89	2,9	5,8	70	101550801	39,22	101550806	37,62
114	2	0,2	40	100423801	1,24	100423806	1,17
114	2	5,8	40	100420801	36,09	100420806	33,85
114	2,9	0,2	60	100433801	1,75	100433806	1,67
114	2,9	0,5	60	100438801	4,38	100438806	4,18
114	2,9	1	60	100435801	8,76	100435806	8,37
114	2,9	3	60	100437801	26,28	100437806	25,11
114	2,9	5,8	60	100439801	50,80	100439806	48,54
139	2,5	0,2	40	100815801	1,87	100815806	1,77
139	2,5	5,8	40	100816801	54,36	100816806	51,47
139	3,6	0,2	70	100818801	2,63	100818806	2,53
139	3,6	0,5	70	100819801	6,58	100819806	6,32
139	3,6	1	70	100820801	13,16	100820806	12,64
139	3,6	3	70	100821801	39,48	100821806	37,93
139	3,6	5,8	70	100822801	76,32	100822806	73,34
168	2,5	0,2	40	100443801	2,27	100443806	2,15
168	2,5	5,8	40	100445801	65,69	100445806	62,40
168	4	0,2	60	100451801	3,52	100451806	3,40
168	4	0,5	60	100761801	8,79	100761806	8,50
168	4	1	60	100762801	17,58	100762806	17,01
168	4	3	60	100763801	52,74	100763806	51,02
168	4	5,8	60	100447801	101,97	100447806	98,65
219	3	0,2	30	100874801	3,51	100874806	3,37
219	3	5,8	30	100876801	101,88	100876806	97,60
219	4,5	0,2	40	100401801	5,15	100401806	5,00
219	4,5	0,5	40	100406801	12,88	100406806	12,51
219	4,5	1	40	100403801	25,76	100403806	25,01
219	4,5	3	40	100404801	77,27	100404806	75,04
219	4,5	5,8	40	100399801	149,38	100399806	145,07
219	6,3	0,2	60	100919801	7,09	100919806	6,94
219	6,3	0,5	60	100921801	17,72	100921806	17,34
219	6,3	1	60	100922801	35,43	100922806	34,68
219	6,3	3	60	100923801	106,30	100923806	104,04
219	6,3	5,8	60	101600801	205,50	101600806	201,14
273	4	0,2	30	100323801	5,76	100323806	5,58
273	4	0,5	30	100324801	14,39	100324806	13,95
273	4	1	30	100325801	28,78	100325806	27,90
273	4	3	30	100327801	86,35	100327806	83,69
273	4	5,8	30	100330801	166,95	100330806	161,80
273	5	0,2	40	100339801	7,12	100339806	6,94
273	5	0,5	40	100344801	17,80	100344806	17,35
273	5	1	40	100345801	35,59	100345806	34,71
273	5	3	40	100346801	106,78	100346806	104,12
273	5	5,8	40	100533801	206,43	100533806	201,31
323	4	0,2	30	100857801	6,85	100857806	6,62
323	4	0,5	30	100860801	17,12	100860806	16,54
323	4	1	30	100861801	34,23	100861806	33,08
323	4	3	30	100863801	102,69	100863806	99,25
323	4	5,8	30	100869801	198,54	100869806	191,88
323	5,6	0,2	40	101312801	9,44	101312806	9,20
323	5,6	0,5	40	101313801	23,60	101313806	23,01
323	5,6	1	40	101314801	47,20	101314806	46,02
323	5,6	3	40	101316801	141,60	101316806	138,06
323	5,6	5,8	40	101319801	273,76	101319806	266,91

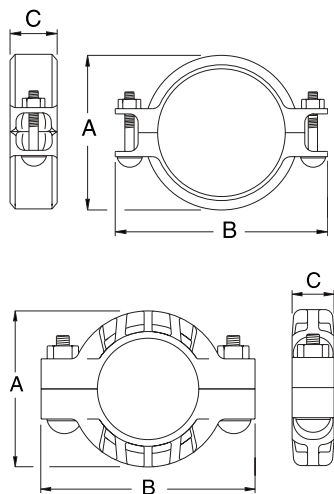
Type Victaulic pipes and pipe fittings

Pipes type Victaulic

ØD mm	t mm	L m	Max working pressure bar	Hot-dip galvanized Item No	Weight kg	Thermo-plastic coated Item No	Weight kg
323	6,3	0,2	55	101329801	10,57	101329806	10,33
323	6,3	0,5	55	101332801	26,42	101332806	25,82
323	6,3	1	55	101333801	52,83	101333806	51,64
323	6,3	3	55	101335801	158,49	101335806	154,91
323	6,3	5,8	55	101330801	306,42	101330806	299,49
406	5	0,2	21	101409801	10,66	101409806	10,39
406	5	0,5	21	101410801	26,65	101410806	25,97
406	5	1	21	101411801	53,31	101411806	51,93
406	5	3	21	101413801	159,92	101413806	155,80
406	5	5,8	21	101406801	309,19	101406806	301,21
406	6,3	0,2	32	101419801	13,31	101419806	13,03
406	6,3	0,5	32	101420801	33,28	101420806	32,58
406	6,3	1	32	101421801	66,56	101421806	65,17
406	6,3	3	32	101423801	199,67	101423806	195,51
406	6,3	5,8	32	101426801	386,02	101426806	377,99
508	5,6	0,2	21	108499801	14,90	108499806	14,57
508	5,6	0,5	21	108500801	37,25	108500806	36,42
508	5,6	1	21	108501801	74,50	108501806	72,84
508	5,6	3	21	108503801	223,50	108503806	218,52
508	5,6	5,8	21	108506801	432,09	108506806	422,48
508	6,3	0,2	25	108509801	16,69	108509806	16,36
508	6,3	0,5	25	108510801	41,73	108510806	40,90
508	6,3	1	25	108511801	83,46	108511806	81,80
508	6,3	3	25	108513801	250,37	108513806	245,40
508	6,3	5,8	25	108516801	484,04	108516806	474,44

Quick couplings and accessories

Coupling type Victaulic complete with rubber gasket



ØD mm	A mm	B mm	C mm	Max. defl.	Max. work. press. bar	Painted Item No	Weight kg	Thermo-plastic coated Item No	Weight kg	
60	ST75	86	130	44	3,0°	35	120930800	0,79	120930806	0,80
60	ST77	92	143	44	3,0°	69	120807800	1,20	120807806	1,21
76	ST75	98	149	44	2,4°	35	120931800	0,89	120931806	0,90
76	ST77	110	160	44	2,4°	69	120808800	1,41	120808806	1,44
89	ST75	114	171	44	2,1°	35	120932800	1,25	120932806	1,26
89	ST77	127	178	44	2,1°	69	120809800	1,72	120809806	1,74
114	ST75	149	196	51	3,2°	35	120933800	1,79	120933806	1,81
114	ST77	162	216	51	3,2°	69	120943800	3,04	120943806	3,08
139	ST75	170	230	51	2,6°	31	120937800	2,40	120937806	2,43
139	ST77	193	240	51	2,6°	69	120813800	4,76	120813806	4,83
168	ST75	203	279	51	2,2°	31	120935800	3,00	120935806	3,05
168	ST77	229	292	51	2,2°	69	120811800	5,18	120811806	5,26
219	ST75	260	356	60	1,7°	31	120936800	5,60	120936806	5,72
219	ST77	289	368	60	1,7°	55	120804800	9,10	120804806	9,24
273	ST77	343	425	64	1,3°	55	120825800	12,80	120825806	12,99
323	ST77	394	483	64	1,1°	55	120826800	15,50	120826806	15,73
406	ST77	483	568	73	0,9°	21	120828800	23,20	120828806	23,55
508	ST77	597	699	79	0,7°	21	120951800	41,40	120951806	42,02

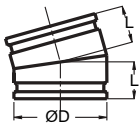
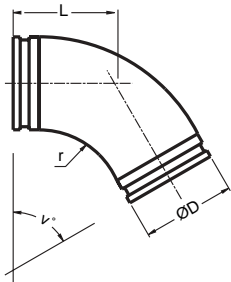
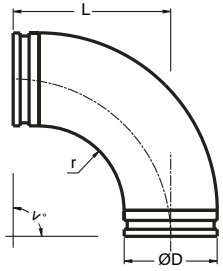
Rubber gaskets



ØD mm	EPDM Item No	Weight kg
60	120803801	0,04
76	120797801	0,05
89	120449801	0,07
114	120805801	0,10
139	120798801	0,15
168	120806801	0,18
219	120807801	0,25
273	120799801	0,65
323	120800801	0,75
406	120801801	0,80
508	120802801	0,95

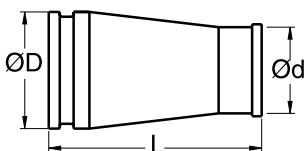
Type Victaulic pipes and pipe fittings

Bends



ØD mm	Angle°	L mm	r mm	Max working pressure bar	Hot-dip galvanized Item No	Weight kg	Thermo-plastic coated Item No	Weight kg
60	7,5	111		50	110466801	1,01		
60	15	111		50	110467801	1,01		
60	30	65	48	69	110468801	0,65		
60	45	75	48	69	110469801	0,78		
60	90	121	48	69	110471801	1,04		
76	7,5	111		60	110487801	1,63		
76	15	111		60	110488801	1,46		
76	30	70	57	60	110489801	0,96		
76	45	82	57	60	110490801	1,16		
76	90	140	57	60	110492801	1,69		
89	7,5	50		70	110508801	1,69	110508806	1,60
89	15	53		70	110509801	1,70	110509806	1,61
89	30	75	70	70	110510801	1,39	110510806	1,32
89	45	90	70	70	110511801	1,62	110511806	1,54
89	90	159	70	70	110513801	2,45	110513806	2,32
114	7,5	51		60	110543801	1,28	110543806	1,22
114	15	55		60	110544801	1,96	110544806	1,86
114	30	85	96	60	110545801	2,06	110545806	1,96
114	45	105	96	60	110546801	2,57	110546806	2,45
114	90	197	96	60	110548801	3,73	110548806	3,54
139	7,5	57		70	110600801	1,83	110600806	1,74
139	15	62		70	110601801	1,88	110601806	1,79
139	30	95	120	70	110602801	2,99	110602806	2,84
139	45	120	120	70	110603801	3,78	110603806	3,59
139	90	235	120	70	110604801	6,13	110604806	5,82
168	7,5	61		70	112376801	2,64	112376806	2,50
168	15	66		70	112377801	2,69	112377806	2,55
168	30	105	145	70	112378801	4,64	112378806	4,41
168	45	135	145	70	112379801	5,71	112379806	5,42
168	90	274	145	70	112381801	9,29	112381806	8,82
219	7,5	65	195	60	110641801	5,55	110641806	5,27
219	15	85	195	60	110642801	6,83	110642806	6,48
219	30	125	195	60	110643801	9,49	110643806	9,02
219	45	165	195	60	110644801	12,37	110644806	11,75
219	90	350	195	60	110646801	24,00	110646806	22,80
273	7,5	75	245	60	110669801	7,62	110669806	7,24
273	15	100	245	60	110670801	9,79	110670806	9,30
273	30	152	245	60	110671801	13,74	110671806	13,05
273	45	208	245	60	110672801	18,00	110672806	17,10
273	90	431	245	60	110674801	32,00	110674806	30,40
323	7,5	63	295	55	110697801	10,19	110697806	9,66
323	15	110	295	55	110698801	13,88	110698806	13,19
323	30	172	295	55	110699801	21,14	110699806	20,08
323	45	239	295	55	110700801	28,46	110700806	27,04
323	90	507	295	55	110702801	50,36	110702806	47,84
406	7,5	103	406	21	110753801	16,14	110753806	15,33
406	15	140	406	21	110754801	21,88	110754806	20,79
406	30	221	406	21	110755801	32,60	110755806	30,97
406	45	313	406	21	110756801	43,40	110756806	41,23
406	90	670	406	21	110758801	75,70	110758806	71,92
508	7,5	102	508	21	110850801	23,32	110850806	22,15
508	15	152	508	21	110851801	31,67	110851806	30,09
508	30	256	508	21	110852801	48,36	110852806	45,94
508	45	368	508	21	110853801	65,05	110853806	61,80
508	90	814	508	21	110854801	115,13	110854806	109,37

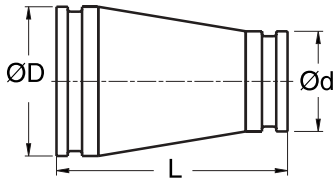
Reducers type Victaulic-K10



ØD mm	Ød mm	L mm	Max working pressure bar	Hot-dip galvanized Item No	Weight kg	Thermo-plastic coated Item No	Weight kg
114	102	90	25	112046801	0,97	112046806	0,92
168	152	87	25	111874801	1,67	111874806	1,59
219	203	148	16	111879801	6,19	111879806	5,88

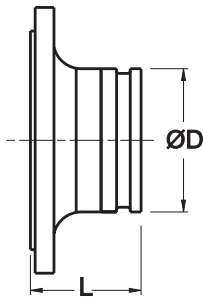
Type Victaulic pipes and pipe fittings

Reducers



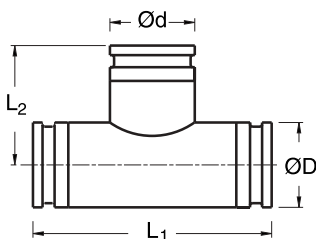
ØD mm	Ød mm	L mm	Max working pressure bar	Hot-dip galvanized Item No	Weight kg	Thermo-plastic coated Item No	Weight kg
76	60	180	70	111852801	1,12		
89	60	180	70	112042801	1,33		
89	76	180	70	111860801	1,56		
114	60	190	60	112044801	1,88	112044806	1,79
114	76	190	60	112047801	1,96	112047806	1,87
114	89	190	60	111870801	2,12	111870806	1,94
139	60	217	70	111896801	2,82	111896806	2,69
139	89	217	70	111897801	3,08	111897806	2,92
139	114	217	70	112048801	3,21	112048806	3,05
168	60	230	70	111858801	3,95	111858806	3,76
168	89	230	70	111859801	4,20	111859806	3,99
168	114	230	70	111876801	4,54	111876806	4,31
168	139	230	70	111875801	4,52	111875806	4,28
219	114	242	60	111890801	7,48	111890806	7,10
219	139	242	60	112054801	7,73	112054806	7,35
219	168	242	60	111877801	8,01	111877806	7,61
273	219	278	60	111882801	12,65	111882806	12,02
323	273	303	55	111207801	33,85	111207806	32,16
406	323	465	21	111883801	48,15	111883806	45,74
508	406	628	21	111884801	37,10	111884806	35,25

Connecting pieces with flange



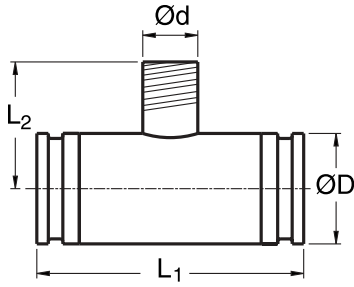
ØD mm	Flange DN/PN	L mm	Max work. pres. bar	DIN	Hot-dip galvanized Item No	Weight kg	Thermo-plastic coated Item No	Weight kg
60	50/40	93	40	2635	111771801	2,25		
60	50/64	107	64	2636	111772801	3,85		
76	65/40	97	40	2635	111774801	4,10		
76	65/64	113	64	2636	111775801	6,10		
89	80/40	103	40	2635	111777801	5,36	111777806	5,09
89	80/64	117	64	2636	111776801	7,82		
114	100/40	109	40	2635	111782801	7,17	111782806	6,82
114	100/64	114	64	2636	111783801	10,35	111783806	9,83
139	125/40	113	40	2635	111787801	10,49	111787806	9,96
139	125/64	133	64	2636	111788801	16,10	111788806	15,30
168	150/40	120	40	2635	111765801	12,57	111765806	11,94
168	150/64	140	64	2636	111766801	23,30	111766806	22,14
219	200/40	133	40	2635	111792801	22,11	111792806	21,00
219	200/64	155	64	2636	111793801	36,74	111793806	34,90
273	250/64	175	64	2636	111798801	57,30	111798806	54,44
323	300/64	190	64	2636	111805801	76,40	111805806	72,58
406	400/16	145	16	2033	111811801	47,40	111811806	45,03
508	500/16	150	16	2033	111814801	72,90	111814806	69,26

Tees



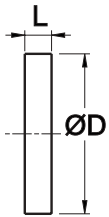
ØD mm	Ød mm	L ₁ mm	L ₂ mm	Max working pressure bar	Hot-dip galvanized Item No	Weight kg	Thermo-plastic coated Item No	Weight kg
60	60	166	83	69	111698801	1,30		
76	76	190	95	69	111701801	2,48		
89	89	216	108	69	112100801	3,00	112100806	2,85
114	60	254	127	69	111737801	2,88		
114	114	254	127	69	112105801	5,24	112105806	4,98
139	139	280	140	69	112109801	7,19	112109806	6,83
168	60	330	165	69	111736801	9,80		
168	76	330	165	69	111720801	9,70		
168	168	330	165	69	112115801	12,05	112115806	11,45
219	168	394	197	55	111731801	12,27	111731806	11,66
219	219	394	197	55	112120801	21,60	112120806	20,52
273	273	458	229	55	111735801	26,50	111735806	25,18
323	323	508	254	55	111905801	38,50	111905806	36,58
323	273	508	254	55	111762801	32,00	111762806	30,40
406	406	610	305	21	111725801	67,20	111725806	63,84
508	508	876	438	21	111500801	121,10	111500806	115,05

Tees with threaded outlet



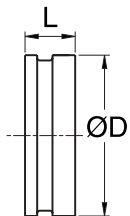
ØD mm	Ød	L ₁ mm	L ₂ mm	Max working pressure bar	Hot-dip galvanized Item No	Weight kg	Thermo-plastic coated Item No	Weight kg
60	2"	250	95	50	111746801	1,34		
76	2"	266	93	46	111749801	2,00		
89	2"	279	93	60	111740801	2,45	111740806	2,33
114	2"	304	108	49	111717801	3,28	111717806	3,12
139	2"	329	123	52	111918801	4,50	111918806	4,27
168	2"	458	138	50	111719801	8,60	111719806	8,17
219	2"	509	165	48	111916801	15,70	111916806	14,92
273	2"	573	193	38	111742801	23,43	111742806	22,26
323	2"	623	219	36	111760801	38,39	111760806	36,47

End caps



ØD mm	L mm	Max working pressure bar	Hot-dip galvanized Item No	Weight kg	Thermo-plastic coated Item No	Weight kg
60	22	69	110351801	0,31		
76	22	69	110353801	0,53		
89	22	69	110380801	0,63	110380806	0,62
114	25	69	110381801	1,11	110381806	1,12
139	25	69	110385801	1,97	110385806	2,01
168	25	69	110383801	2,74	110383806	2,90
219	30	55	110384801	5,78	110384806	5,90
273	32	55	111816801	9,76	111816806	9,95
323	32	55	110369801	16,03	110369806	16,35

Welding rings, untreated



ØD mm	t mm	L mm	Max working pressure bar	Item No	Weight kg
60	1,8	43	83	120983810	0,20
76	2	43	60	120280810	0,29
89	2	43	40	120985810	0,39
89	3,2	43	70	120985820	0,43
114	2	43	40	120851810	0,51
114	2,9	43	60	120851820	0,53
114	3,6	43	85	120851830	0,57
139	2,5	43	40	120852810	0,66
139	3,6	43	70	120852820	0,72
168	2,5	43	40	120855810	0,85
168	4	43	60	120855820	0,98
168	6,3	43	70	120855830	1,12
219	3	43	30	120865810	1,55
219	4,5	43	40	120865820	1,69
219	6,3	43	60	120865830	1,86
273	4	48	30	120357800	2,40
273	5	48	40	120356800	2,43
273	6,3	48	60	120358800	2,47
323	4	48	30	120844800	2,61
323	5,6	48	40	120845800	2,66
323	6,3	48	55	120846800	2,79
406	5	58	21	120391810	4,18
508	5,6	58	21	120392810	7,00

Assembly instruction



1.

The gaskets outer mating surface and the lips' inner mating surfaces are lightly greased with a lithium or silicon-based grease. The rubber gasket is slid onto one of the pipe ends.



2.

Align the connecting pipe's end with a clearance of 2-3 mm. Slide the rubber gasket over the joint.



3.

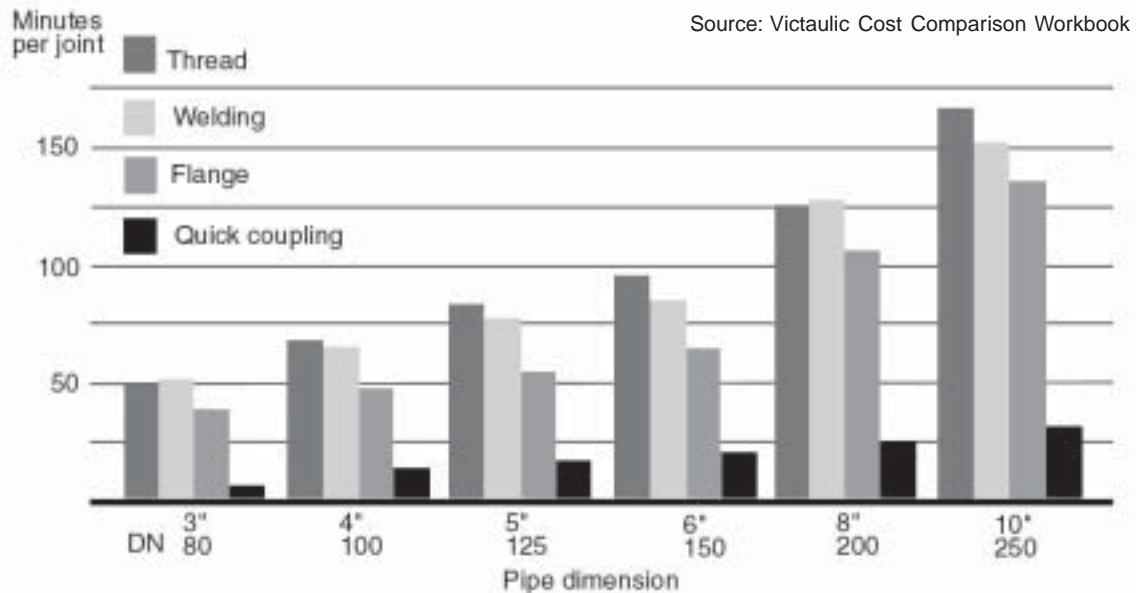
Fit the two halves of the coupling so that they enclose the gasket and the pipe ends.



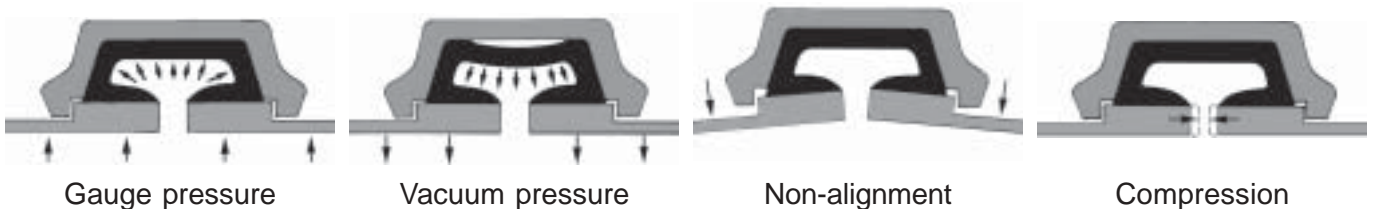
4.

Tighten the screws evenly and alternately.

Assembly times compared



Self-sealing gaskets





SIHCon AS
Idrettsveien 21 d
1087 Oslo
TLF: 22 21 16 70
FAX: 22 21 16 21
E-MAIL: post@sihcon.no



Cert. No. 952144



Cert. No. SW980145

